

# 5101 13TH AVENUE BROOKLYN, NY (Corner of 51st)



## THE INFO

**BOOTH  
STREET**

### SIZE

GROUND  
3,124 SF

### FRONTAGE

100' Wraparound frontage

### CEILING HEIGHTS

12'

### NEIGHBORS

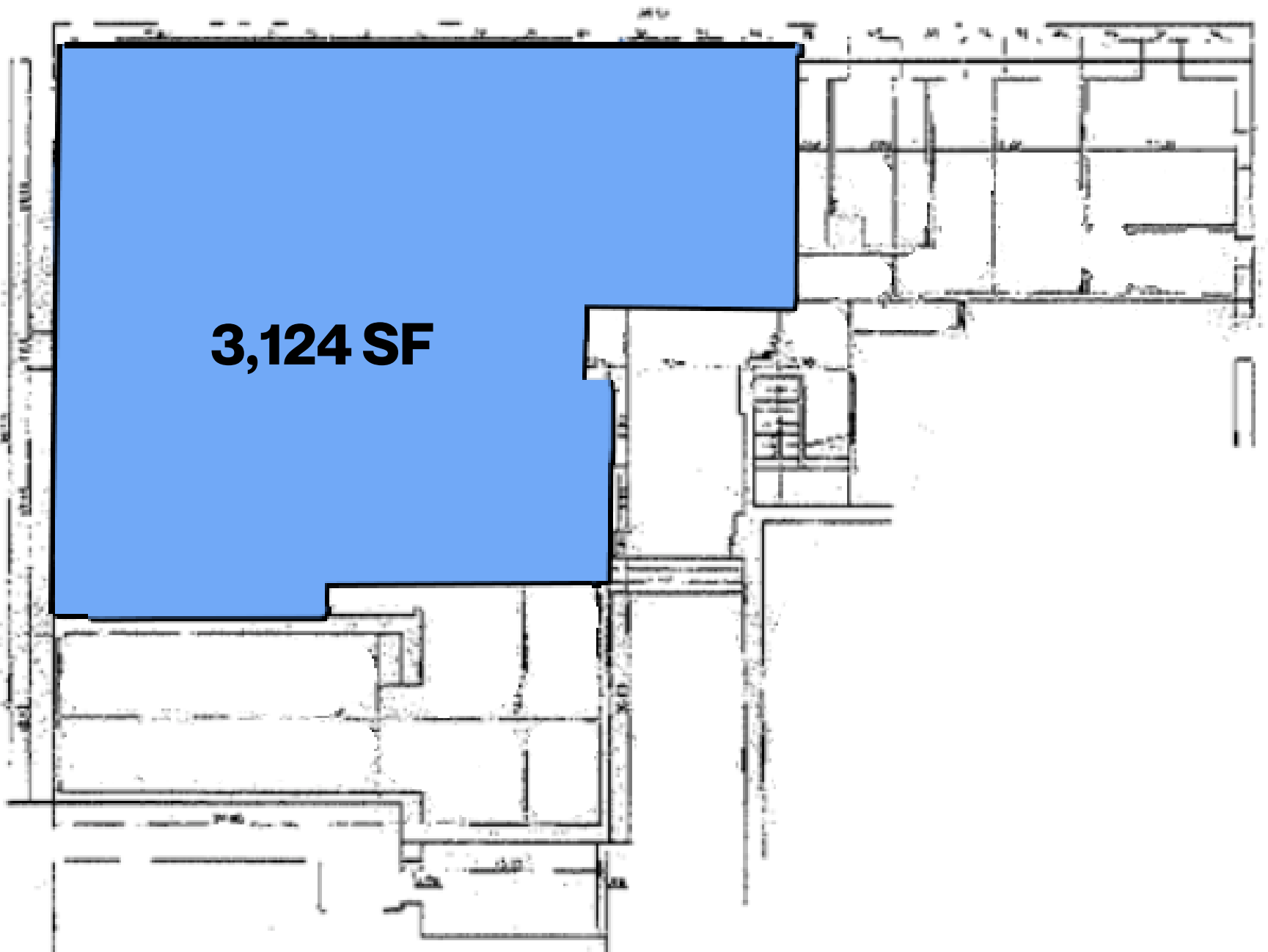
Chase Bank, Ritas, Primetime Restaurant, Urbana, Citi, Jus by Julie, Toys4U, Duane Reade, Sprinkles, Webster Bank, Strauss Bakery, Spoons, Hot Bagels & Deli

### COMMENTS

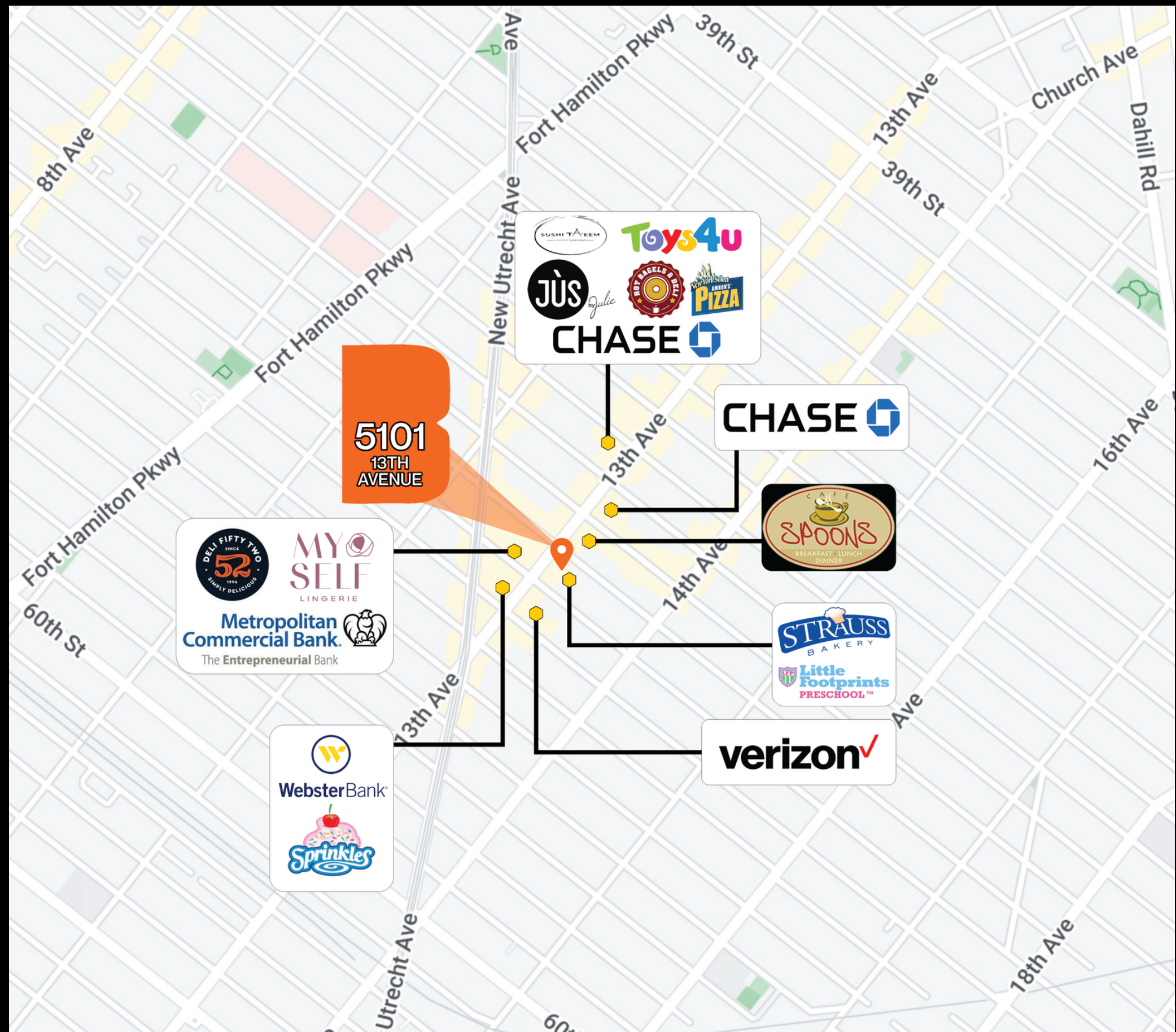
Perfect for medical, bank, & food

One of the top retail corners in Borough Park.

## THE SITE SITE PLAN



## THE MAP



**Adam Agus**  
adam@boothcap.com  
347- 829- 5547

**BOOTH**  
STREET  
LEASING